



# Greater Las Vegas Association of REALTORS® November 2011 Statistics



	Single Family Residential Units			Condo/Townhouse Units		
	Nov 11	Change from Oct 11	Change from Nov 10	Nov 11	Change from Oct 11	Change from Nov 10
<b>AVAILABILITY AT END OF PERIOD</b>						
# of available units listed	20,818	-3.1%	-8.0%	4,399	-3.6%	-24.7%
Median list price of available units	\$ 128,800	-0.2%	-7.3%	65,000	+0.2%	-7.1%
Average list price of available units	\$ 204,156	+1.0%	-9.6%	140,172	+3.8%	-3.7%
<b>*AVAILABILITY AT END OF PERIOD</b>						
# of available units listed w/o offers	9,780	-5.5%	-22.3%	2,103	-3.6%	-34.3%
Median list price of available units w/o offers	\$ 139,000	+0.2%	-2.5%	\$ 74,500	+4.1%	-1.3%
Average list price of available units w/o offers	\$ 262,260	+2.8%	-3.0%	\$ 209,397	+5.0%	+9.0%
<b>NEW LISTINGS THIS PERIOD</b>						
# of new listings	3,612	-10.1%	-9.1%	838	-10.9%	-20.3%
Median price of new listings	\$ 127,925	-1.6%	-5.2%	\$ 63,844	+2.2%	-3.1%
Average price of new listings	\$ 183,547	-4.0%	-1.7%	\$ 104,259	-3.4%	-6.9%
<b>UNITS SOLD THIS PERIOD</b>						
# of units sold	3,159	+1.3%	+13.8%	724	-5.1%	-1.2%
Median price of units sold	\$ 125,000	+3.3%	-7.3%	\$ 58,000	-1.7%	-10.6%
Average price of units sold	\$ 151,343	+0.9%	-7.0%	\$ 73,398	-1.5%	-6.3%
<b>TIME ON MARKET FOR UNITS SOLD THIS PERIOD</b>						
	Nov 11	Oct 11	Nov 10	Nov 11	Oct 11	Nov 10
0-30 days	38.7%	38.6%	40.5%	40.5%	40.1%	37.0%
31-60 days	20.0%	21.3%	19.8%	25.4%	22.7%	22.5%
61-90 days	13.3%	14.3%	12.2%	10.5%	13.8%	13.5%
91-120 days	8.5%	8.4%	9.0%	6.8%	7.6%	9.1%
121+ days	19.5%	17.4%	18.5%	16.9%	15.9%	17.9%
<b>TOTAL HOME SALES DOLLAR VALUE FOR UNITS SOLD THIS PERIOD</b>						
	Nov 11	Change from Oct 11	Change from Nov 10	Nov 11	Change from Oct 11	Change from Nov 10
	\$ 478,093,673	+2.2%	+5.8%	\$ 53,139,969	-6.5%	-7.5%

\*This category reflects the existing market availability of listings without pending or contingent offers.

Source: Greater Las Vegas Association of REALTORS®

For media inquiries, please call George McCabe, with B&P Public Relations, at (702) 325-7358.

DISCLAIMER: This data is based on information from the Greater Las Vegas Association of REALTORS® (GLVAR) Multiple Listing Service (MLS). This information is deemed reliable but is not guaranteed. MLS collects, compiles and distributes information about homes listed for sale by its subscribers who are real estate agents. MLS subscription is available to all real estate agents licensed in Nevada, but is not available to the general public. Not all licensed agents subscribe to the MLS. MLS does not include all new homes available or listings from non-MLS agents, nor does it include properties for sale by owner. The territorial jurisdiction of the GLVAR as a member of the National Association of REALTORS® includes Clark, Nye, Lincoln and White Pine Counties, Nevada, and such other areas as from time to time may be allocated to the GLVAR by the Board of Directors of the National Association of REALTORS®.



## Greater Las Vegas Association of REALTORS® November 2011 Statistics

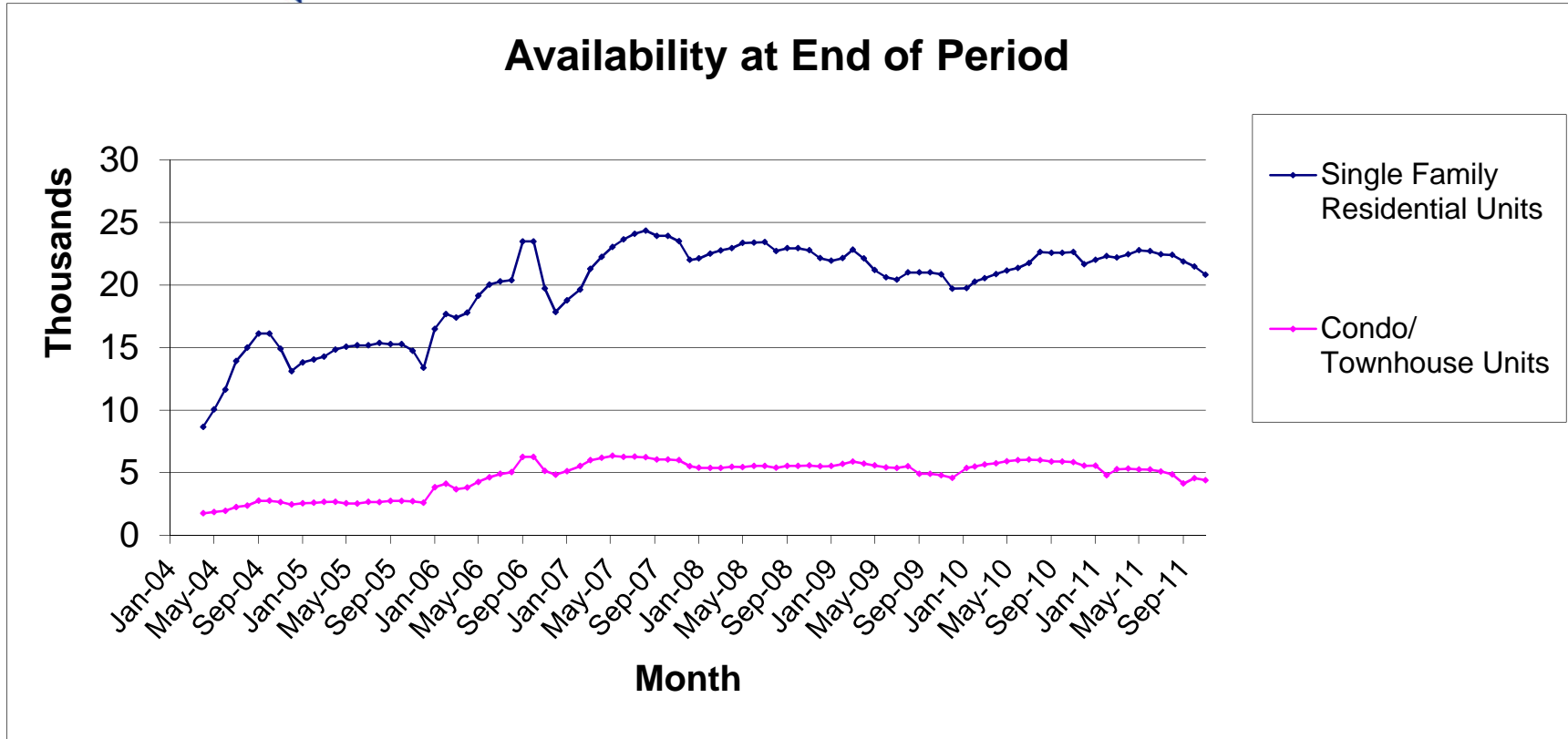
### Sold Units Statistics by Area (see map)

Area	Single Family Residential Units			Condo/Townhouse Units		
	# of units sold	Median Sold Price	Average Sold Price	# of units sold	Median Sold Price	Average Sold Price
101 - North	39	\$50,000	\$55,714	1	\$40,000	\$40,000
102 - North	221	\$150,000	\$167,287	9	\$71,500	\$70,211
103 - North	404	\$105,250	\$117,705	37	\$52,000	\$54,807
201 - East	48	\$39,950	\$42,523	15	\$25,500	\$119,827
202 - East	74	\$62,500	\$62,066	21	\$29,900	\$27,931
203 - East	85	\$81,000	\$95,011	12	\$34,188	\$33,790
204 - East	156	\$78,000	\$85,408	22	\$44,450	\$43,474
301 - South	55	\$68,000	\$82,946	65	\$66,000	\$110,147
302 - South	63	\$90,000	\$93,372	56	\$43,000	\$73,181
303 - South	192	\$127,500	\$140,448	34	\$75,000	\$80,205
401 - North West	20	\$70,950	\$87,539	3	\$32,000	\$33,083
402 - North West	125	\$65,550	\$69,246	29	\$34,000	\$38,931
403 - North West	85	\$110,000	\$123,588	69	\$47,100	\$52,545
404 - North West	108	\$186,000	\$250,380	26	\$117,450	\$137,265
405 - North West	209	\$130,000	\$146,645	40	\$63,000	\$64,533
501 - South West	54	\$108,820	\$130,543	27	\$50,000	\$49,318
502 - South West	149	\$165,000	\$296,601	32	\$53,250	\$59,325
503 - South West	146	\$145,000	\$161,235	76	\$60,750	\$85,203
504 - South West	205	\$125,000	\$149,396	31	\$55,000	\$57,934
505 - South West	178	\$154,882	\$190,513	15	\$87,500	\$93,987
601 - Henderson	28	\$120,000	\$175,259	10	\$69,950	\$73,065
602 - Henderson	113	\$150,000	\$179,059	35	\$87,000	\$92,923
603 - Henderson	34	\$140,750	\$200,308	11	\$39,500	\$59,073
604 - Henderson	45	\$115,000	\$120,096	3	\$69,000	\$58,967
605 - Henderson	86	\$145,000	\$161,782	17	\$61,500	\$68,126
606 - Henderson	173	\$195,892	\$272,620	24	\$89,000	\$106,613
701 - Boulder City	7	\$225,000	\$290,986	-	\$0	\$0
702 - Boulder City	3	\$285,000	\$264,000	1	\$132,000	\$132,000
800 - Mesquite	1	\$262,000	\$262,000	3	\$46,000	\$45,333
801 - Muddy River (Moapa, Glendale, Logandale, Overton)	4	\$143,700	\$144,600	-	\$0	\$0
802 - Mt. Charleston/Lee Canyon	2	\$202,050	\$202,050	-	\$0	\$0
803 - Indian Springs/Cold Creek	-	\$0	\$0	-	\$0	\$0
804 - Mountain Springs	-	\$0	\$0	-	\$0	\$0
805 - Blue Diamond	-	\$0	\$0	-	\$0	\$0
806 - State Line/Jean/Goodsprings	-	\$0	\$0	-	\$0	\$0
807 - Sandy Valley	-	\$0	\$0	-	\$0	\$0
808 - Laughlin	3	\$155,900	\$187,778	-	\$0	\$0
809 - Other Clark County	-	\$0	\$0	-	\$0	\$0
810 - Pahrump	36	\$116,250	\$115,120	-	\$0	\$0
811 - Nye County	1	\$27,000	\$27,000	-	\$0	\$0
812 - Lincoln County	1	\$62,000	\$62,000	-	\$0	\$0
813 - Other Nevada	-	\$0	\$0	-	\$0	\$0
814 - Amargosa Valley	-	\$0	\$0	-	\$0	\$0
815 - Beatty	-	\$0	\$0	-	\$0	\$0
816 - White Pine County	6	\$101,250	\$94,083	-	\$0	\$0
900 - Outside Nevada	1	\$270,000	\$270,000	-	\$0	\$0

Source: Greater Las Vegas Association of REALTORS®

For media inquiries, please call George McCabe, B&P Public Relations, at (702) 325-7358.

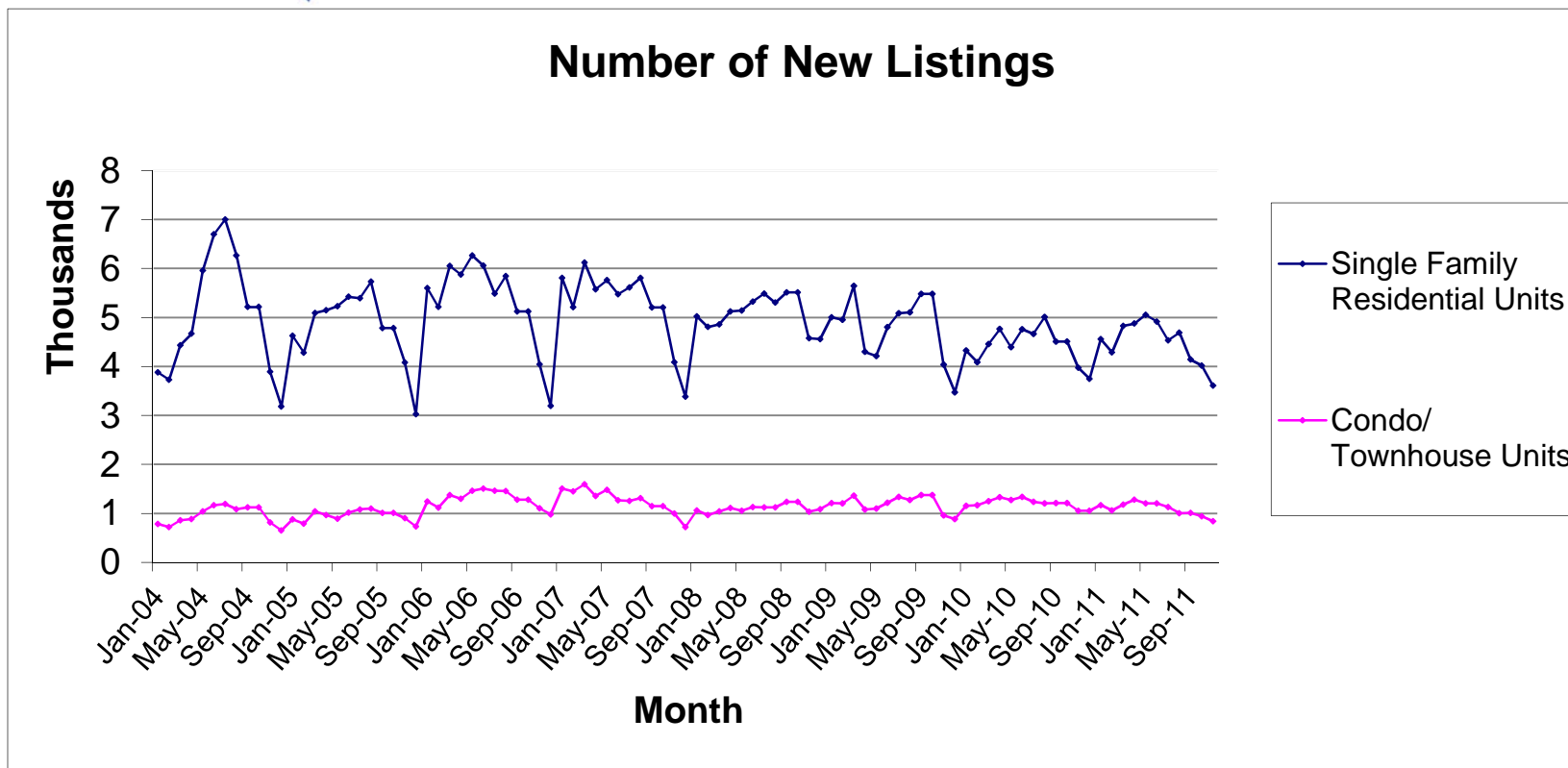
DISCLAIMER: This data is based on information from the Greater Las Vegas Association of REALTORS® (GLVAR) Multiple Listing Service (MLS). This information is deemed reliable but is not guaranteed. MLS collects, compiles and distributes information about homes listed for sale by its subscribers who are real estate agents. MLS subscription is available to all real estate agents licensed in Nevada, but is not available to the general public. Not all licensed agents subscribe to the MLS. MLS does not include all new homes available or listings from non-MLS agents, nor does it include properties for sale by owner. The territorial jurisdiction of the GLVAR as a member of the National Association of REALTORS® includes Clark, Nye, Lincoln and White Pine Counties, Nevada, and such other areas as from time to time may be allocated to the GLVAR by the Board of Directors of the National Association of REALTORS®.



Source: Greater Las Vegas Association of REALTORS®

For media inquires, please call George McCabe, B&P Public Relations, at (702) 325-7358.

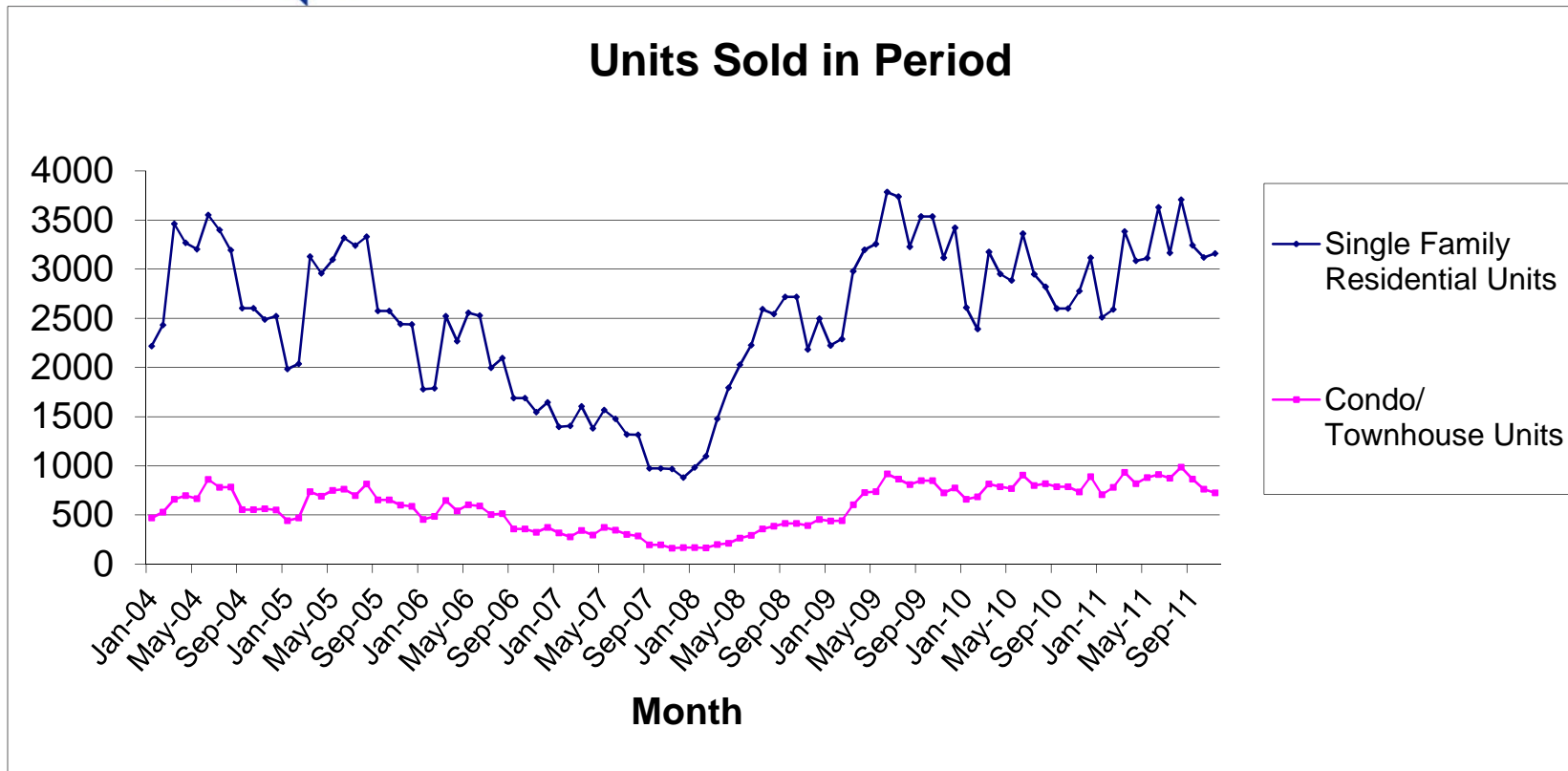
**DISCLAIMER:** This data is based on information from the Greater Las Vegas Association of REALTORS® (GLVAR) Multiple Listing Service (MLS). This information is deemed reliable but is not guaranteed. MLS collects, compiles and distributes information about homes listed for sale by its subscribers who are real estate agents. MLS subscription is available to all real estate agents licensed in Nevada, but is not available to the general public. Not all licensed agents subscribe to the MLS. MLS does not include all new homes available or listings from non-MLS agents, nor does it include properties for sale by owner. The territorial jurisdiction of the GLVAR as a member of the National Association of REALTORS® includes Clark, Nye, White Pine and Lincoln Counties, Nevada, and such other areas as from time to time may be allocated to the GLVAR by the Board of Directors of the National Association of REALTORS®.



Source: Greater Las Vegas Association of REALTORS®

For media inquiries, please call George McCabe, B&P Public Relations, at (702) 325-7358.

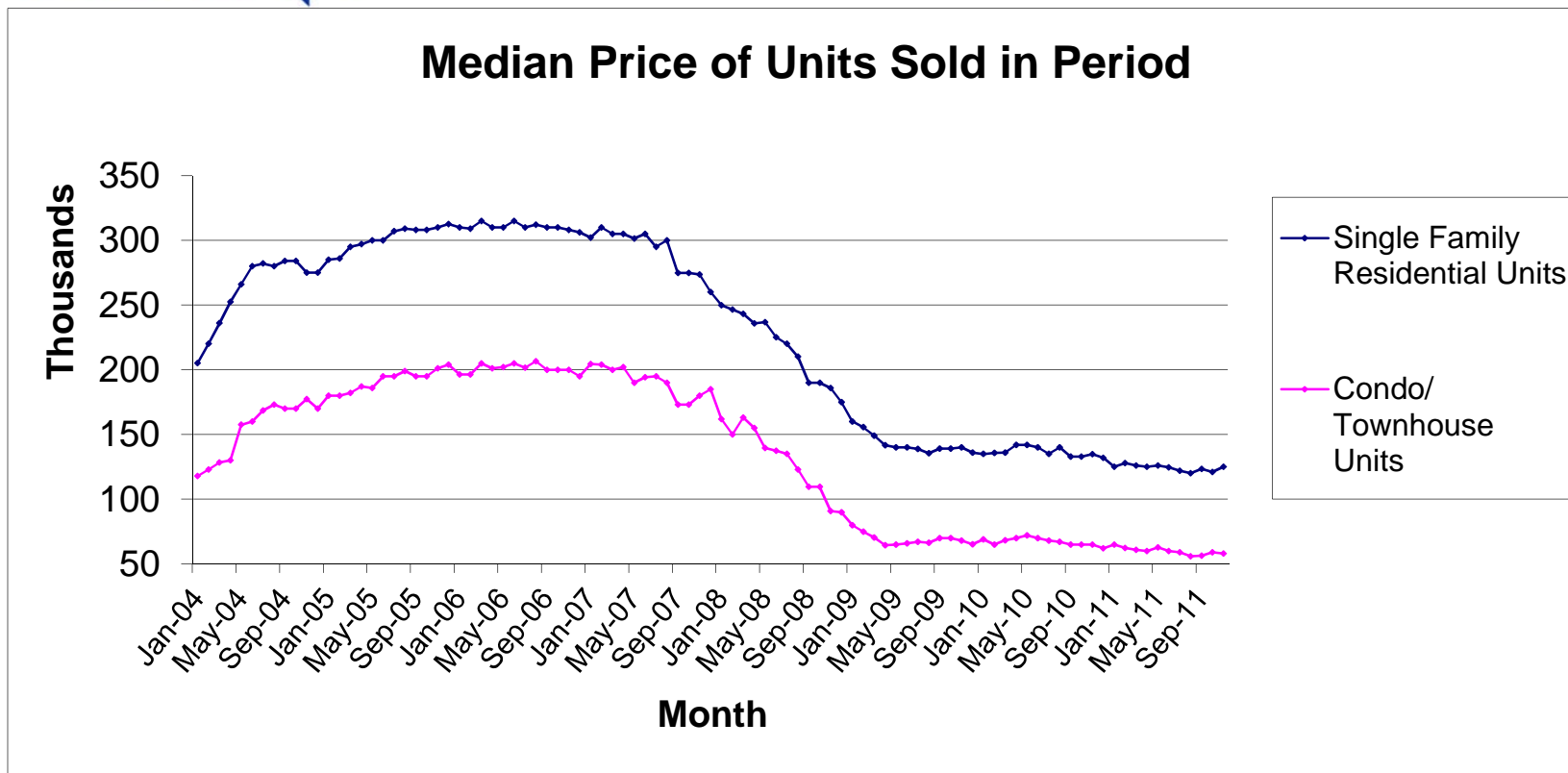
**DISCLAIMER:** This data is based on information from the Greater Las Vegas Association of REALTORS® (GLVAR) Multiple Listing Service (MLS). This information is deemed reliable but is not guaranteed. MLS collects, compiles and distributes information about homes listed for sale by its subscribers who are real estate agents. MLS subscription is available to all real estate agents licensed in Nevada, but is not available to the general public. Not all licensed agents subscribe to the MLS. MLS does not include all new homes available or listings from non-MLS agents, nor does it include properties for sale by owner. The territorial jurisdiction of the GLVAR as a member of the National Association of REALTORS® includes Clark, Nye, White Pine and Lincoln Counties, Nevada, and such other areas as from time to time may be allocated to the GLVAR by the Board of Directors of the National Association of REALTORS®.



Source: Greater Las Vegas Association of REALTORS®

For media inquiries, please call George McCabe, B&P Public Relations, at (702) 325-7358.

**DISCLAIMER:** This data is based on information from the Greater Las Vegas Association of REALTORS® (GLVAR) Multiple Listing Service (MLS). This information is deemed reliable but is not guaranteed. MLS collects, compiles and distributes information about homes listed for sale by its subscribers who are real estate agents. MLS subscription is available to all real estate agents licensed in Nevada, but is not available to the general public. Not all licensed agents subscribe to the MLS. MLS does not include all new homes available or listings from non-MLS agents, nor does it include properties for sale by owner. The territorial jurisdiction of the GLVAR as a member of the National Association of REALTORS® includes Clark, Nye, White Pine and Lincoln Counties, Nevada, and such other areas as from time to time may be allocated to the GLVAR by the Board of Directors of the National Association of REALTORS®.

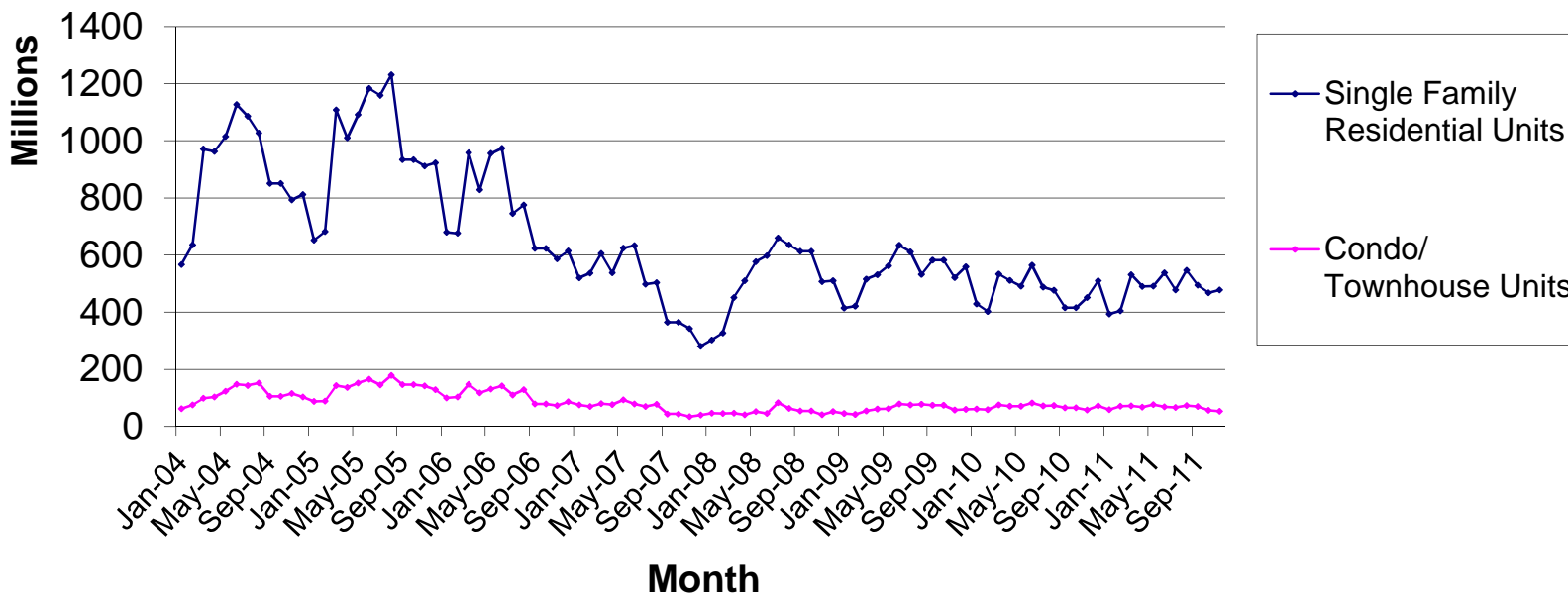


Source: Greater Las Vegas Association of REALTORS®

For media inquiries, please call George McCabe, B&P Public Relations, at (702) 325-7358.

**DISCLAIMER:** This data is based on information from the Greater Las Vegas Association of REALTORS® (GLVAR) Multiple Listing Service (MLS). This information is deemed reliable but is not guaranteed. MLS collects, compiles and distributes information about homes listed for sale by its subscribers who are real estate agents. MLS subscription is available to all real estate agents licensed in Nevada, but is not available to the general public. Not all licensed agents subscribe to the MLS. MLS does not include all new homes available or listings from non-MLS agents, nor does it include properties for sale by owner. The territorial jurisdiction of the GLVAR as a member of the National Association of REALTORS® includes Clark, Nye, White Pine and Lincoln Counties, Nevada, and such other areas as from time to time may be allocated to the GLVAR by the Board of Directors of the National Association of REALTORS®.

### Total Home Sales Value for Units Sold in Period



Source: Greater Las Vegas Association of REALTORS®

For media inquiries, please call George McCabe, B&P Public Relations, at (702) 325-7358.

DISCLAIMER: This data is based on information from the Greater Las Vegas Association of REALTORS® (GLVAR) Multiple Listing Service (MLS). This information is deemed reliable but is not guaranteed. MLS collects, compiles and distributes information about homes listed for sale by its subscribers who are real estate agents. MLS subscription is available to all real estate agents licensed in Nevada, but is not available to the general public. Not all licensed agents subscribe to the MLS. MLS does not include all new homes available or listings from non-MLS agents, nor does it include properties for sale by owner. The territorial jurisdiction of the GLVAR as a member of the National Association of REALTORS® includes Clark, Nye, White Pine and Lincoln Counties, Nevada, and such other areas as from time to time may be allocated to the GLVAR by the Board of Directors of the National Association of REALTORS®.